

THE UNIVERSITY OF MICHIGAN  
REGENTS COMMUNICATION

ACTION REQUEST

Subject: Ann Street Parking Structure

Action Requested: Approval of Project and Authorization to Appoint an Architect / Engineer

Background:

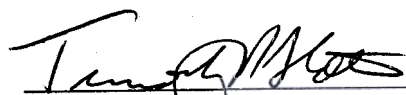
In July 2001, the Regents approved the Catherine Street Parking Structure Horizontal Expansion Project. By utilizing the adjacent surface parking lot, the expansion was planned to create approximately 230 new parking spaces. In order to coordinate construction along Ann Street with the Biomedical Science Research Building, it was determined that construction of the Catherine Structure expansion needed to be deferred until 2004. In July 2002, the Regents approved the purchase of the 1127 East Ann Street parcel that provided an opportunity to increase the number of parking spaces to create approximately 500 new spaces. Fifty-two existing surface lot spaces will be displaced by the project, resulting in a net increase of 448 parking spaces. The Ann Street Parking Structure is an integral part of the University's Parking and Transportation five-year plan that was presented to Regents in September 2003.

A 500-car parking structure is proposed for the north side of Ann Street between Glen Avenue and Zina Pitcher Place, as shown on the attached site map. The proposed Ann Street Parking Structure will connect to the Catherine Street Parking Structure at ground level.

The estimated cost of the project is \$13,000,000. Funding will be provided from Parking resources. The construction cash flow may be provided, all or in part, by increasing the commercial paper issuance under the commercial paper program, secured by a pledge of General Revenues, and authorized by the Regents. The architecture/engineering firm of Walker Parking will design the project. Polshek Partnership, the architectural firm responsible for design of the Biomedical Science Research Building, will serve as an advisor for design issues during the project. Design is scheduled to begin in December 2003 and we will propose a construction schedule in a subsequent Action Request.

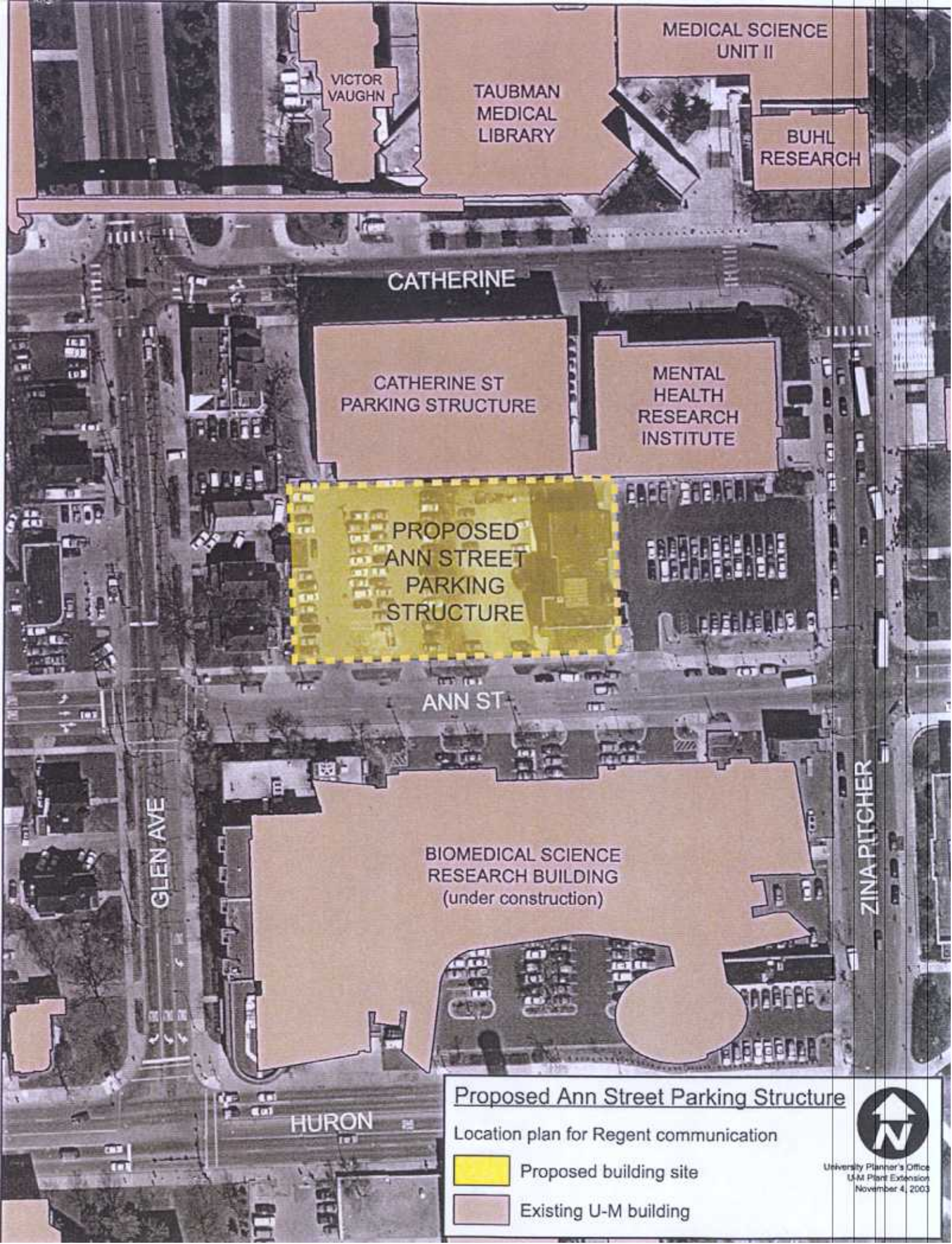
We recommend the Regents approve the Ann Street Parking Structure project as described and authorize commissioning Walker Parking for its design.

Respectfully submitted,

  
\_\_\_\_\_  
Timothy P. Slottow  
Executive Vice President and  
Chief Financial Officer

November 2003  
Attachment

APPROVED BY THE REGENTS ON  
NOV 20 2003



VICTOR VAUGHN

TAUBMAN  
MEDICAL  
LIBRARY

MEDICAL SCIENCE  
UNIT II

BUHL  
RESEARCH

CATHERINE

CATHERINE ST  
PARKING STRUCTURE

MENTAL  
HEALTH  
RESEARCH  
INSTITUTE

PROPOSED  
ANN STREET  
PARKING  
STRUCTURE

ANN ST

BIOMEDICAL SCIENCE  
RESEARCH BUILDING  
(under construction)


GLEN AVE


ZINA PITCHER

HURON

Proposed Ann Street Parking Structure

Location plan for Regent communication

 Proposed building site

 Existing U-M building

