

THE UNIVERSITY OF MICHIGAN
REGENTS COMMUNICATION

ACTION REQUEST

Approved by the Regents
May 20, 2010

Subject: Golf Practice Facility

Action

Requested: Approval of Project and Authorization to Appoint an Architect

Background:

The Department of Intercollegiate Athletics is proposing to construct a new golf practice facility to address the need for indoor practice facilities, team facilities, and support spaces for the men's and women's varsity golf teams. The proposed site for the new facility is at the existing driving range (see attached map). An approximately 10,000 gross square foot facility will be constructed that will provide year-round practice with a putting and chipping area and driving bays to utilize the existing driving range, as well as a team gathering space, coaches offices, locker rooms, a conference room, and storage. Parking will be accommodated on site, and we will provide additional information when we seek approval of schematic design.

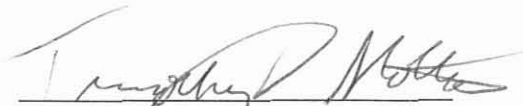
The estimated cost of the project is \$2,500,000. Funding will be provided from Athletic Department resources and gifts. The construction cash flow may be provided, all or in part, by increasing the commercial paper issuance under the commercial paper program, secured by a pledge of General Revenues, and authorized by the Board of Regents. The architectural firm of Ann Arbor Architects Collaborative will design the project. Design is scheduled to begin immediately and we will return with a construction schedule when we seek approval of schematic design.

We recommend that the Board of Regents approve the Golf Practice Facility project as described and authorize commissioning Ann Arbor Architects Collaborative for its design.

Respectfully submitted,

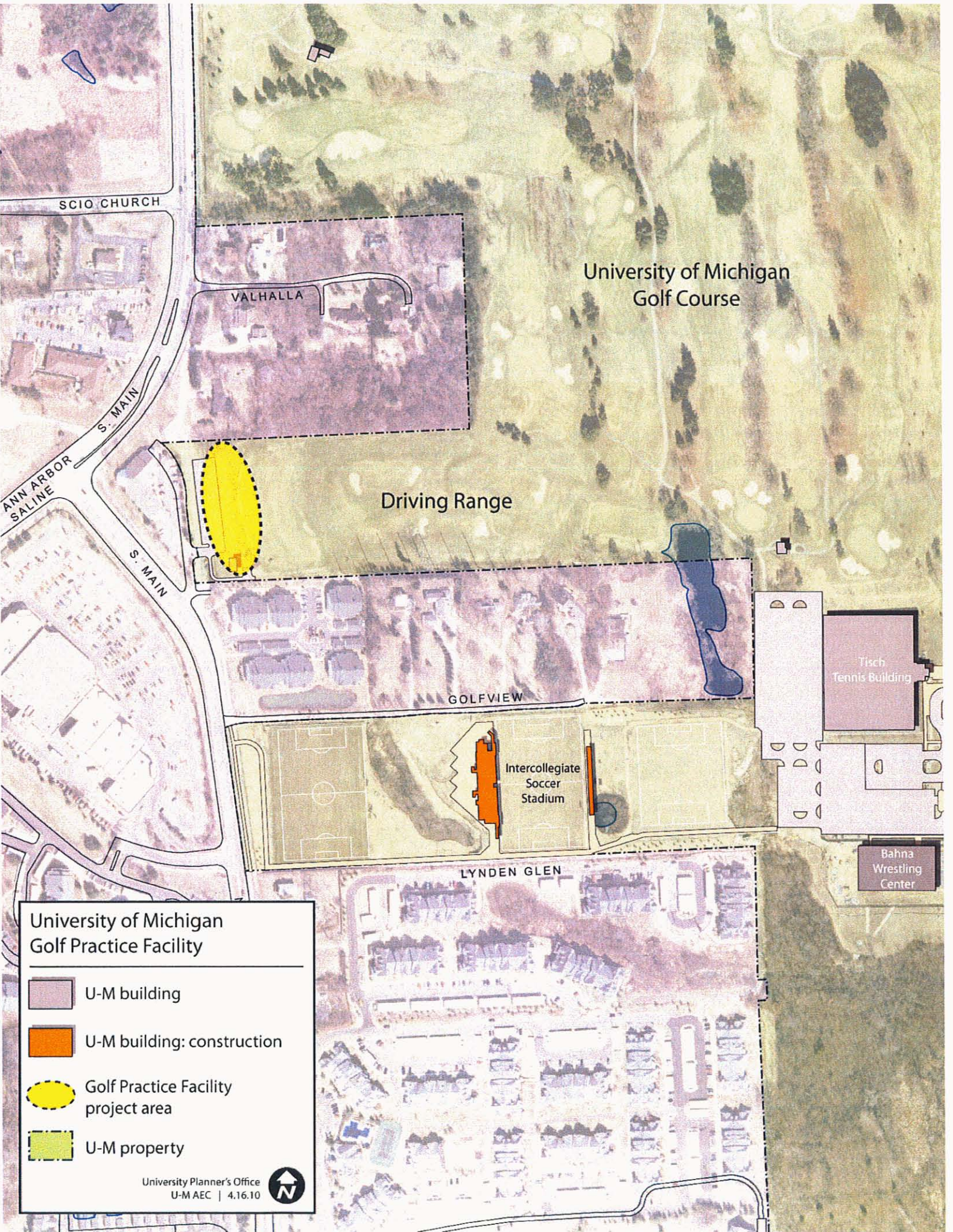


David A. Brandon
Donald R. Shepherd Director of
Intercollegiate Athletics



Timothy P. Slottow
Executive Vice President and
Chief Financial Officer

May 2010
Attachment



SCIO CHURCH

VALHALLA

University of Michigan
Golf Course

Driving Range

ANN ARBOR
SALINE
S. MAIN

GOLFVIEW

Intercollegiate
Soccer
Stadium

Tisch
Tennis Building

Bahna
Wrestling
Center

LYNDEN GLEN

University of Michigan Golf Practice Facility

-  U-M building
-  U-M building: construction
-  Golf Practice Facility project area
-  U-M property

University Planner's Office
U-M AEC | 4.16.10

