

**Tom Girard**  
U of M DESIGN SUPERVISOR

APPROVED BY  
**AEC - Architecture & Engineering**

REPRESENTING  
**AF/BB** PROJECT LEAD

DRAWN BY  
**CWV/VSM**

DESIGNED BY  
**WPG** PROJECT LEAD

REVIEWED BY

MARK	ISSUED FOR/REVISIONS	DATE
•	New Master	03/20/15
•	Tunnel Group Revision	08/13/12
•	New Master	06/28/07
•	Issued for Review	06/22/07
•	ISSUED FOR/REVISIONS	DATE

**Tunnels**

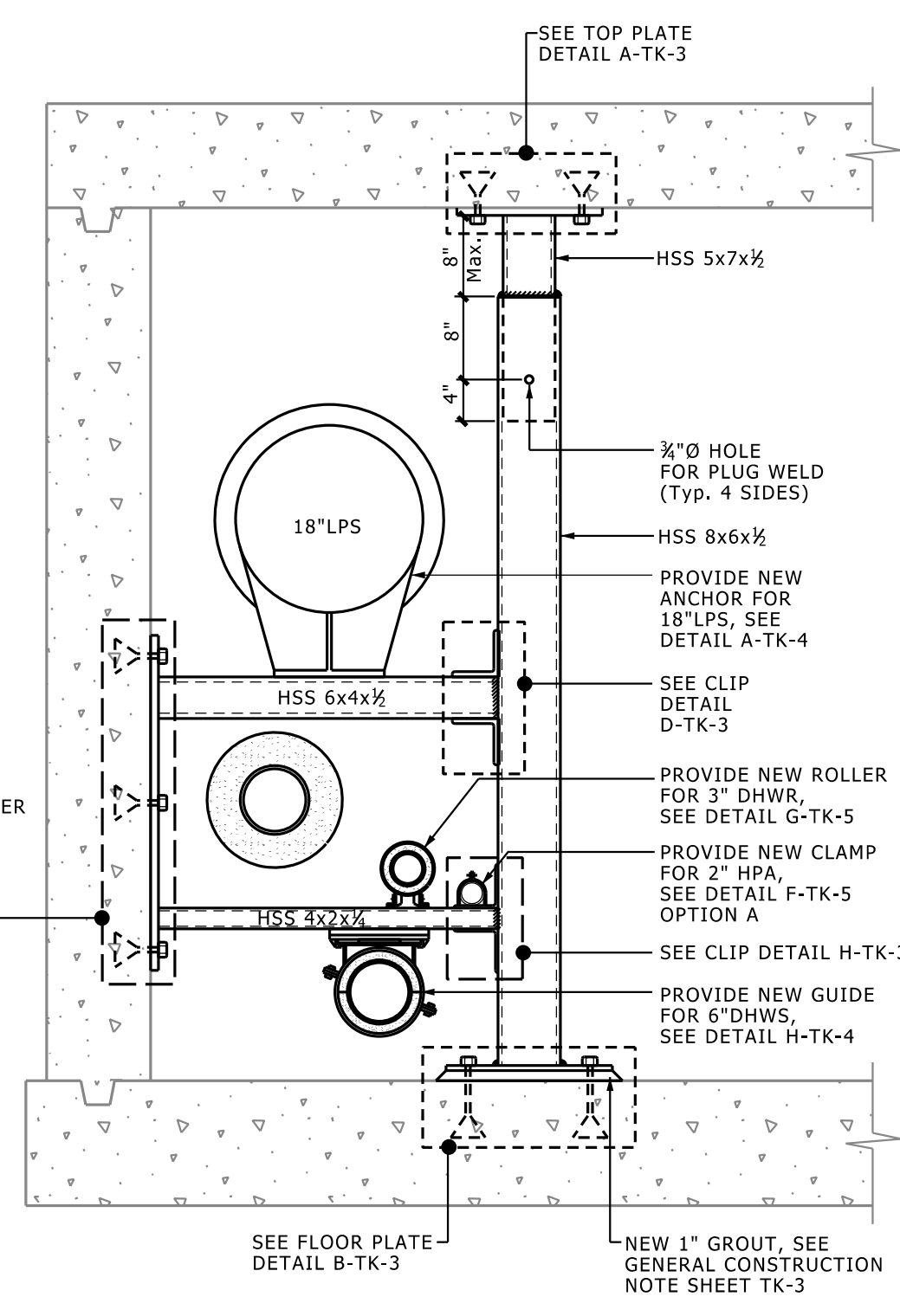
**Tool Kit**

**University Of Michigan**  
**Ann Arbor , MI**

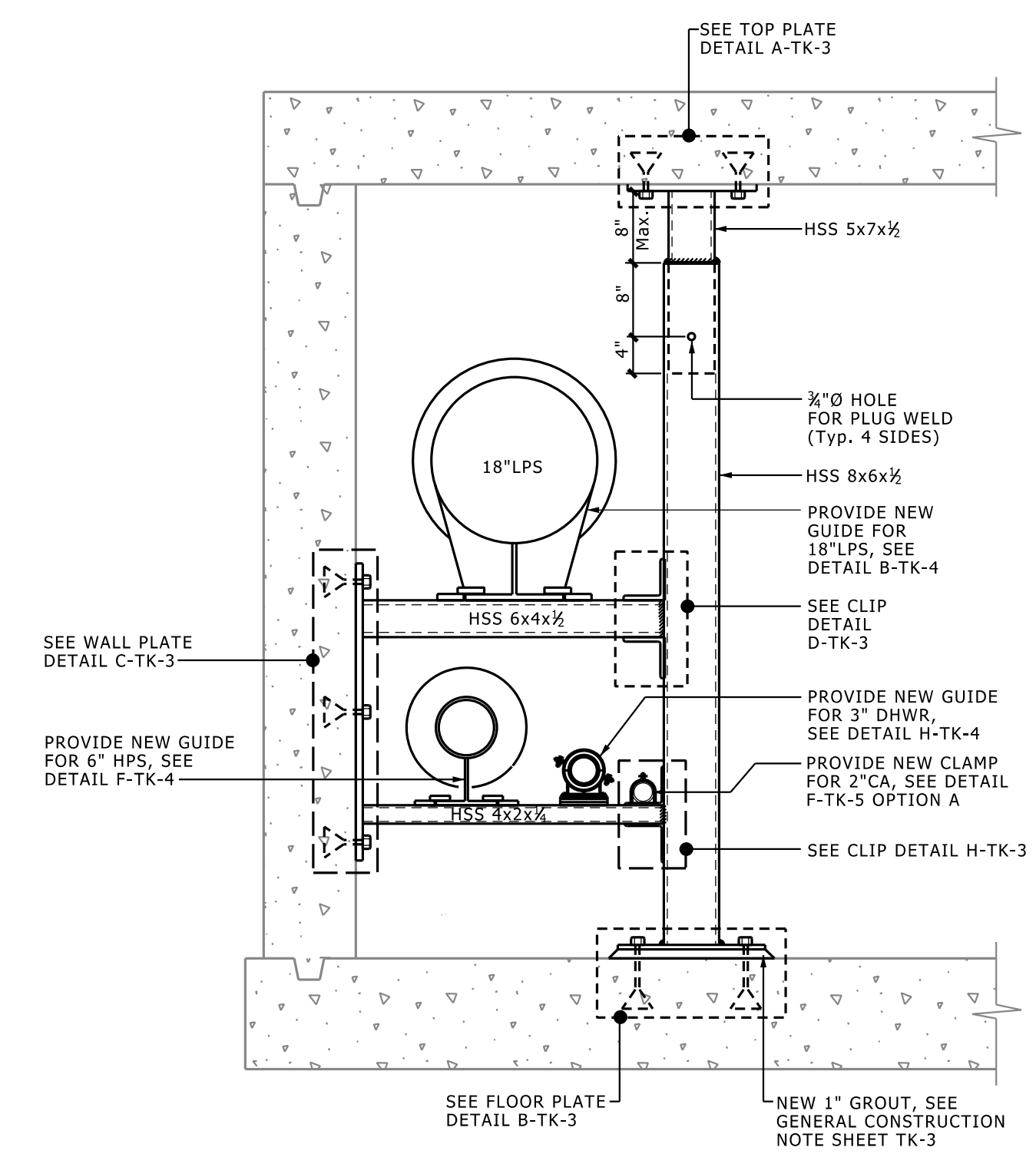
**P00009388** U of M PROJECT NO.  
**9980** BUILDING NO.

SHEET TITLE  
**Mechanical**  
**Typical Construction Detail Sections**

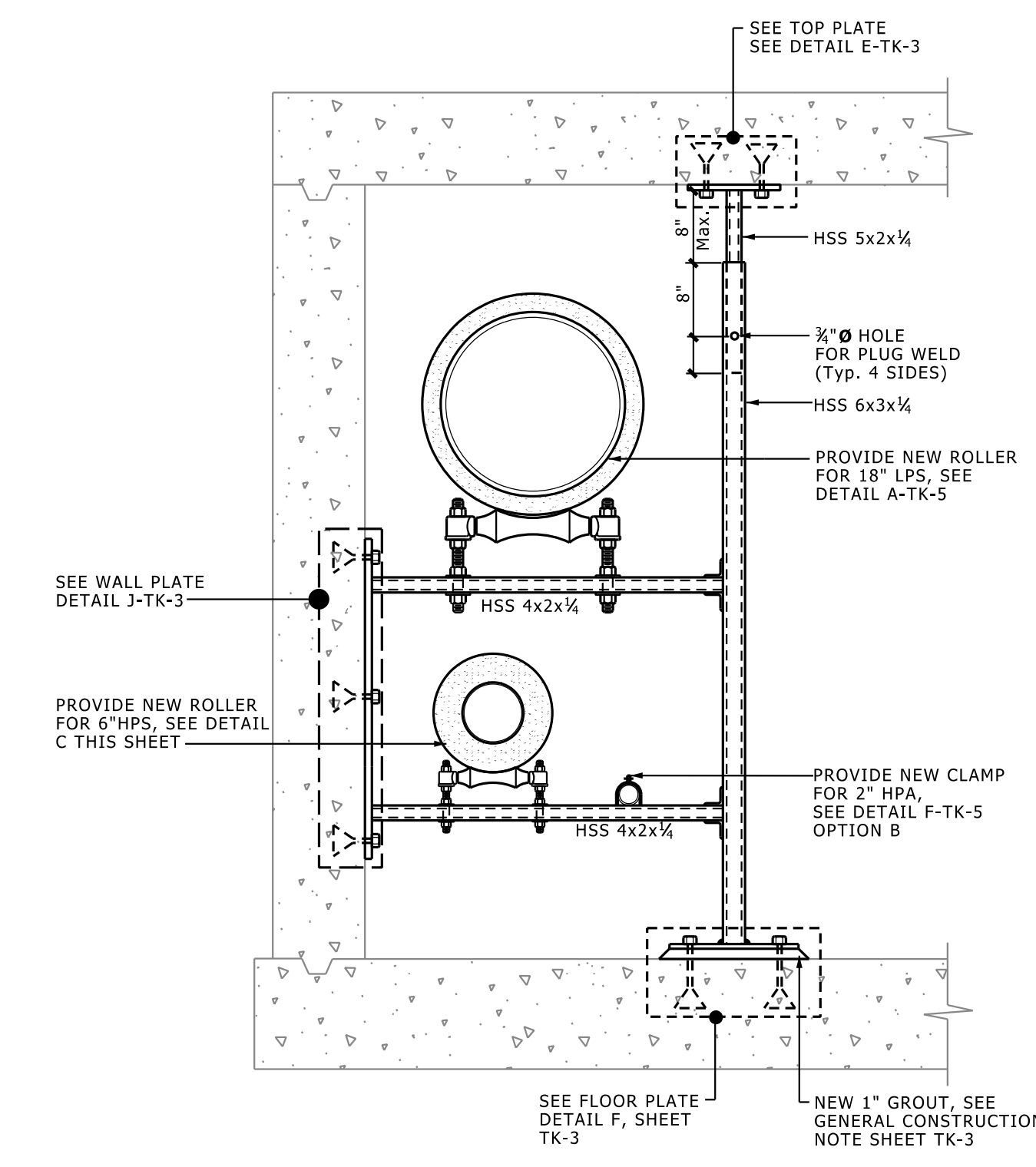
SHEET NO.  
**TK-2**  
SHEET NO. 3 OF 13 SHEET FILE NO. TK-2 04 15.dgn



**1 ANCHOR SUPPORT SECTION**  
TK-2 SCALE: 3/4" = 1'-0"



**2 GUIDE SUPPORT SECTION**  
TK-2 SCALE: 3/4" = 1'-0"



**3 ROLLER SUPPORT SECTION**  
TK-2 SCALE: 3/4" = 1'-0"

**Tool Kit Overview**

THIS TOOL KIT IS INTENDED TO INDICATE DETAILS THAT WERE SUCCESSFUL IN PAST PROJECTS AND TO INDICATE LEVEL OF DETAIL REQUIRED IN THE BID DOCUMENTS. THESE DETAILS ARE NOT "CUT AND PASTE" FOR ALL PROJECTS.

EACH SUPPORT SHOULD HAVE A CONSTRUCTION REFERENCE NOTE REFERRING TO A SECTION DETAIL. SUPPORTS THAT ARE IDENTICAL MAY USE THE SAME NOTE AND SECTION DETAIL (AS IN CONSTRUCTION REFERENCE NOTES 5 AND 6). NOT ALL SUPPORTS HAVE BEEN DETAILED FOR THIS EXAMPLE.

**NOTE:**  
GIVE EXISTING CONDITIONS TO SUPPORT ACCURATE BIDDING.  
CONSULT AEC FOR AVAILABLE DRAWING AND/OR LASER SCAN FILES.

