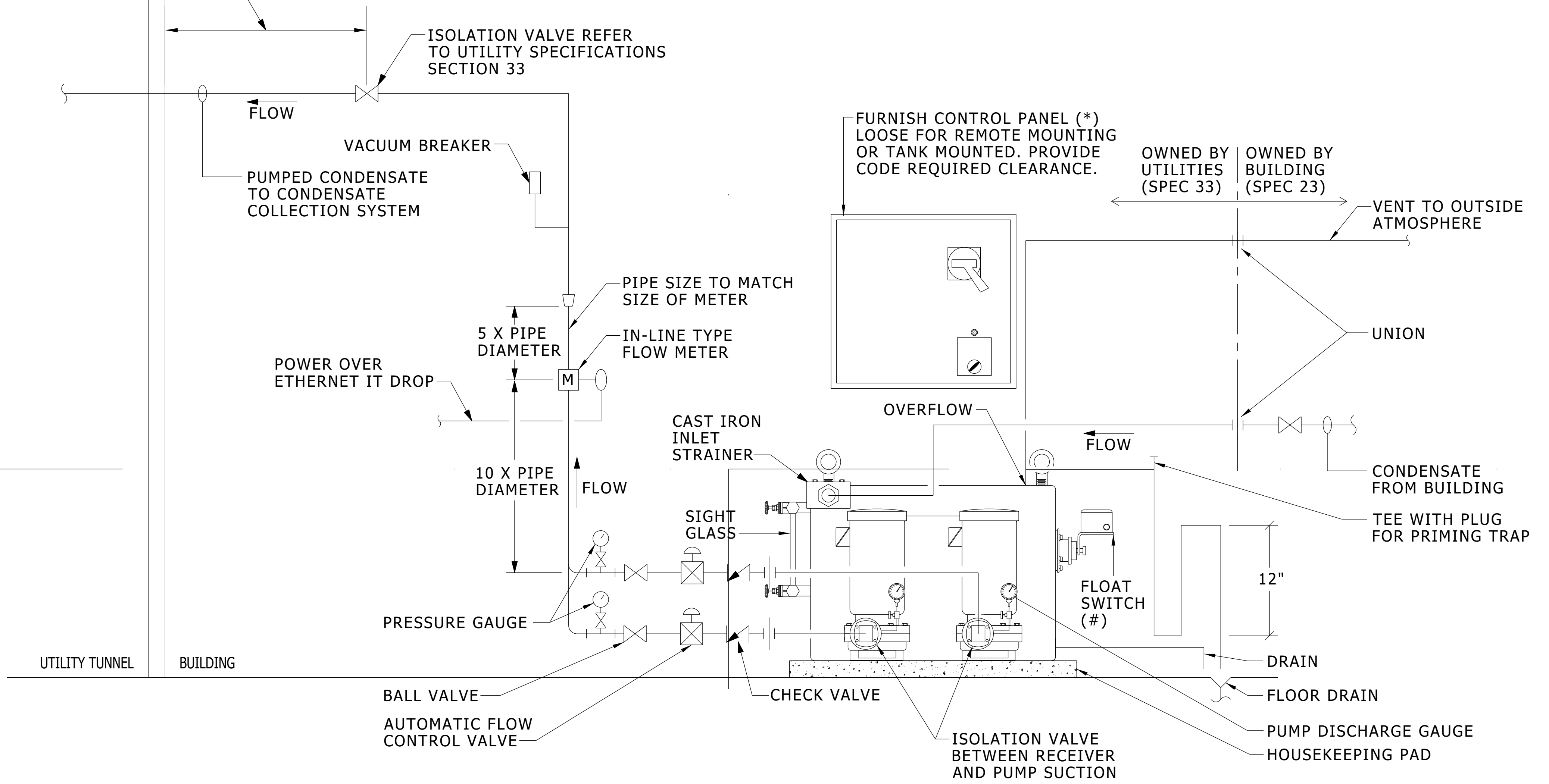


AS CLOSE TO BUILDING ENTRANCE  
AS POSSIBLE, BUT NO MORE THAN  
5 FT INSIDE OF BUILDING



NOTE:

1. ALL BUILDING OWNED (DIVISION 23) CRU MUST DISCHARGE TO A COMMON (UTILITY OWNED) CRU BEFORE BEING DISCHARGED TO CONDENSATE COLLECTION SYSTEM (UTILITY OWNED).
2. UTILITY OWNED CRU TO BE LOCATED AS CLOSE AS POSSIBLE TO UTILITY STEAM/CONDENSATE ENTRANCE INTO BUILDING.
3. CRU IS TO BE PROVIDED WITH INTEGRAL TEMPERATURE SENSOR.
4. METER MUST STAY FLOODED AT ALL TIMES.
5. STRAIGHT PIPE LENGTHS INDICATED ARE MINIMUMS.
6. REFER TO MANUFACTURER'S INSTALLATION MANUAL FOR INSTALLATION INSTRUCTIONS AND ADDITIONAL REQUIREMENTS.
7. REFER TO UTILITY SPECIFICATION SECTION 33 FOR ALL PIPE MATERIAL AND INSULATION REQUIREMENTS.

## UTILITY MAINTAINED - FLOOR MOUNTED BUILDING CONDENSATE RETURN UNIT DETAIL WITH CONDENSATE METERING

NO SCALE

MD 336333 003 2025-XX-XX

DESIGNER NOTES:

1. XXX