

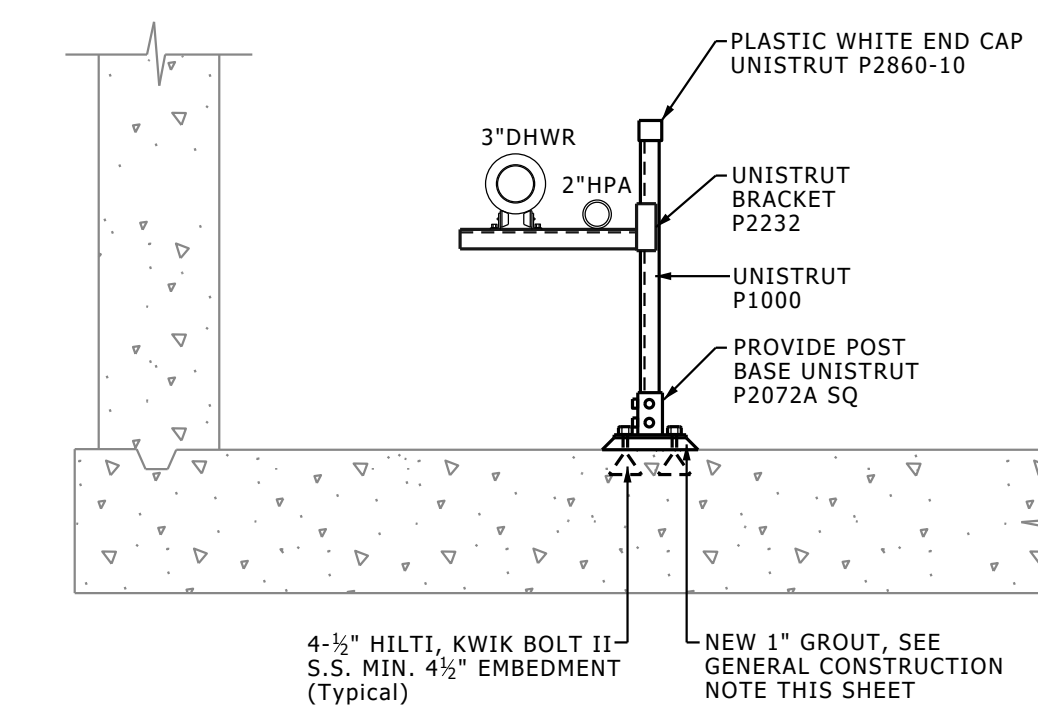
TUNNEL TOOL-KIT

REFERENCE DETAILS, SUPPORTS & SECTIONS

For
Design Professionals Use if Deemed Applicable and Adequate for Project
Not For Construction

UM TUNNEL TOOL KIT REFERENCE DETAILS, SUPPORTS & SECTIONS

FOR DESIGN PROFESSIONAL USE IF DEEMED APPLICABLE & ADEQUATE
APPROVED BY
AEC - Architecture & Engineering
REPRESENTING
PS/BB CAD PROJECT LEAD
DRAWN BY PROJECT LEAD
CAD/BB
DESIGNED BY REVIEWED BY



4 3" OR SMALLER PIPING ROLLER & SLIDE STEEL SUPPORT
SCALE: 3/4" = 1'-0"

General Construction Note

ROUGHEN CONCRETE AND APPLY BONDING AGENT BEFORE PLACING A NON-SHRINK METALLIC GROUT BASE, MIN. 1" THICK (OR AS SHOWN ON DETAIL) OR CONCRETE BASE AS SHOWN OVER EXISTING FLOOR. NON-SHRINK GROUT: GROUT SHALL BE PREMIXED, NON-SHRINK NON-CATALYZED NATURAL AGGREGATE GROUT, FOR COLUMN ERECTION, AND OTHER STRUCTURAL LOAD BEARING APPLICATIONS, AND FOR ITEMS SETS INTO CONCRETE BLOCKOUTS OR DEPRESSIONS, OR SET INTO CONCRETE TOPPING. L&M "CRYSTEX", W.R. MEADOWS "588 GROUT", MASTER BUILDERS "MASTERFLOW 928 GROUT", OR DAYTON-SUPERIOR "HIGH PERFORMANCE", SEVEN-DAY COMPRESSIVE STRENGTH FOR THE SPECIFIED CONSISTENCY SHALL BE AT LEAST, 7,000 PSI PLASTIC, 6,000 PSI FLOWABLE, AND 5,000 PSI FLUID CONSISTENCY. PAINT UP TO 24" AFF, ALSO TOP & WALL PLATES WITH TWO COATS OF "METALLIZE" POLYMER COATING BY DRUMMOND AMERICAN, ON ALL STEEL SUPPORTS; NOT FACTORY PAINTED. SURFACE PREPARATION AND APPLICATION PER MANUFACTURER INSTRUCTIONS. CLEAN/PREP EXISTING STEEL PER DETAIL PRIOR TO PAINTING. PAINT ALL STEEL, INCLUDING HORIZONTAL MEMBERS BELOW 24" AFF.

Note to Designers:

- (1) PREFERRED STEEL SUPPORT DETAILS FOR EXISTING AND NEW TUNNELS ARE SHOWN IN THIS SHEET.
- (2) DETAILS NOT INTENDED AS FINALIZED DESIGN. INTENT IS TO SHOW PREFERENCES IN CONSTRUCTION AND REQUIRED DEPTH OF DETAILS TO BE PROVIDED IN BID DOCUMENTS. DESIGN ENGINEER SHALL DETERMINE APPROPRIATE APPLICATION AND ADEQUACY.

Posted to Web	10/20/23
New Master	06/20/23
Draft Master for Review	05/08/23
ISSUED FOR/REVISIONS	DATE

Tunnels

Tool Kit

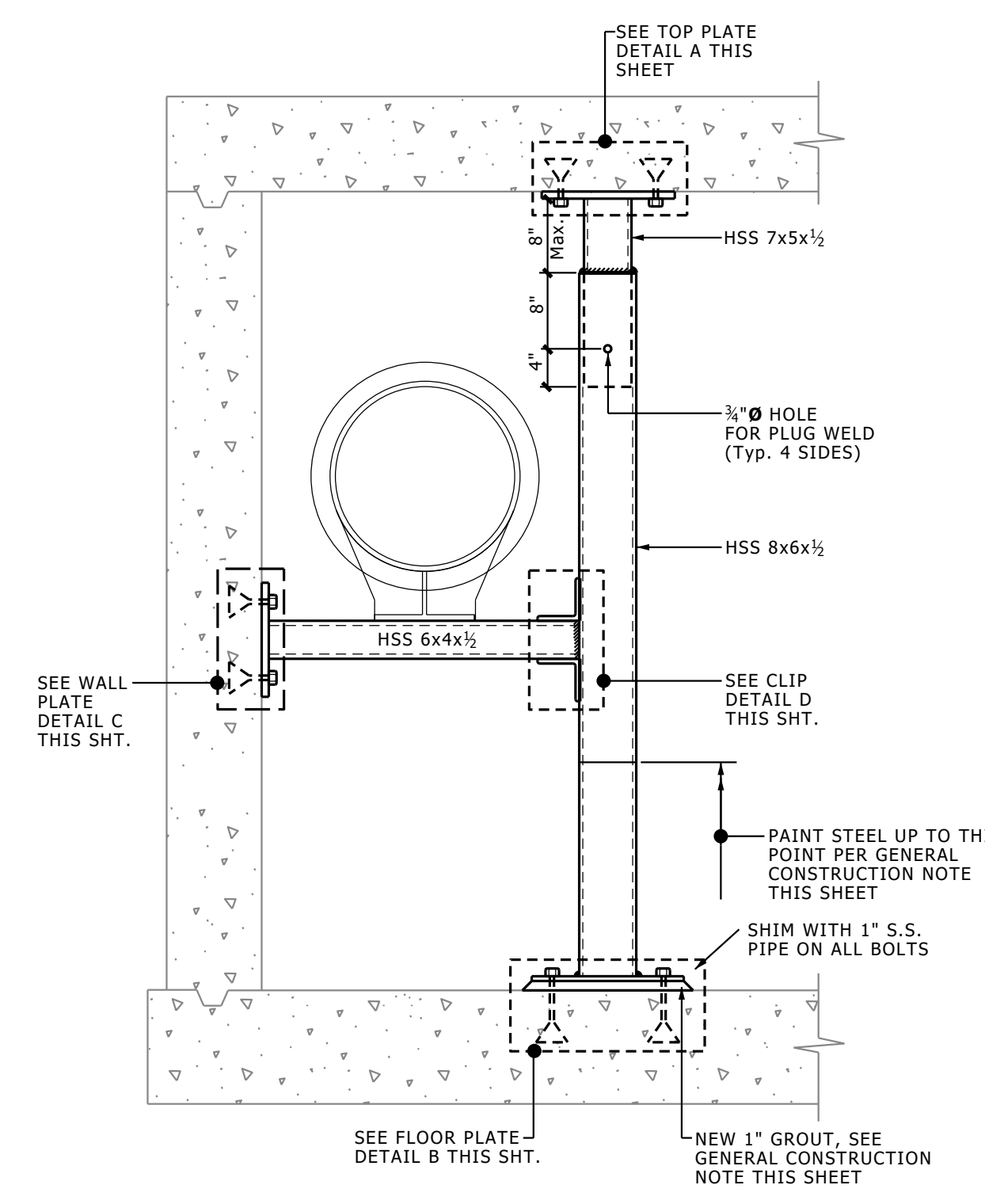
University Of Michigan
Ann Arbor , MI

P0000XXXX U OF M PROJECT NO. BUILDING NO. XXXX

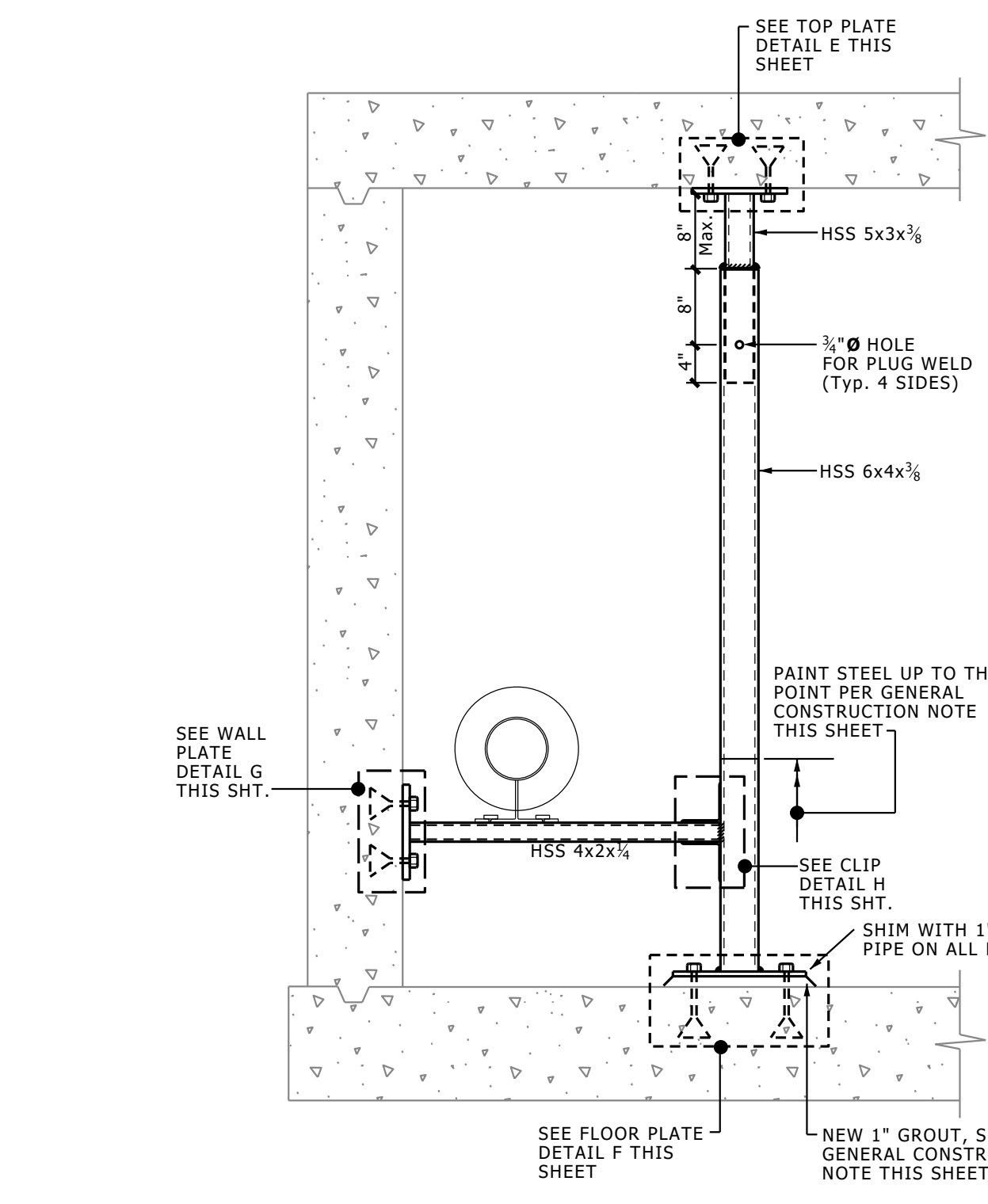
SHEET TITLE **Tunnels**

Steel Supports Typical Sections & Details

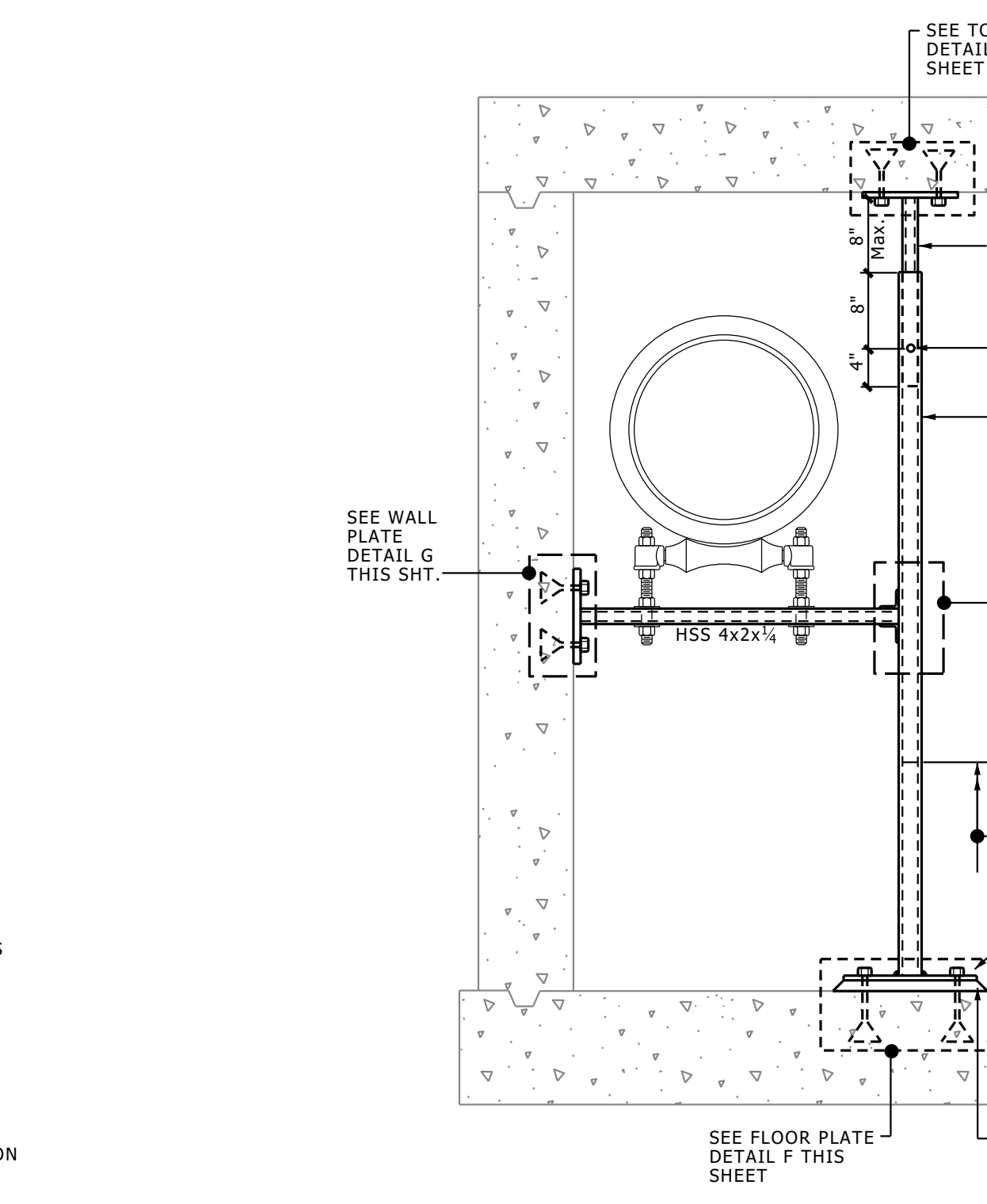
SHEET NO. **TK-3**



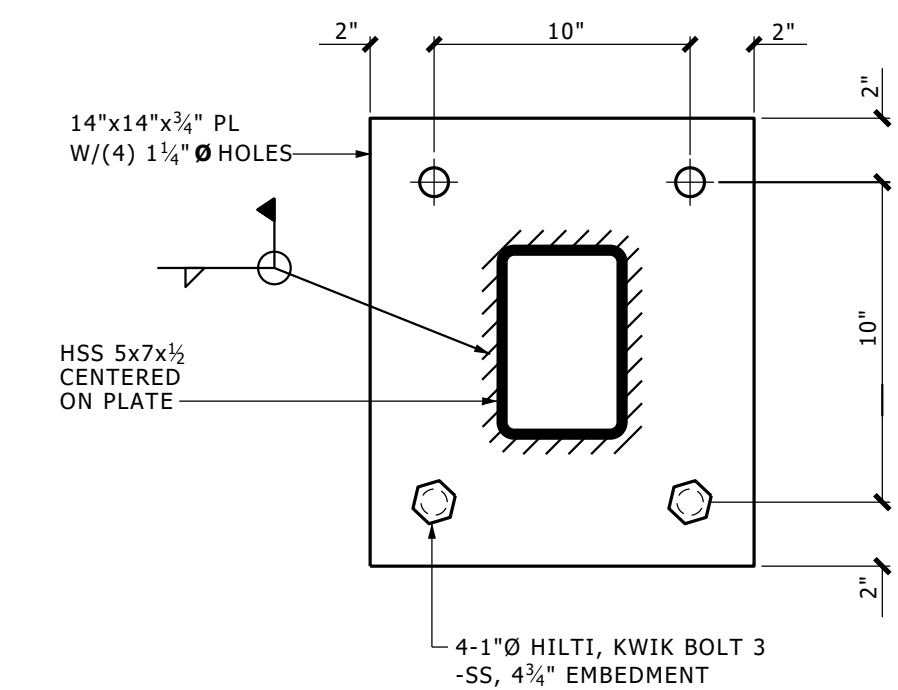
1 14" - 20" LPS & HPS ANCHOR & GUIDE STEEL SUPPORT
SCALE: 3/4" = 1'-0"



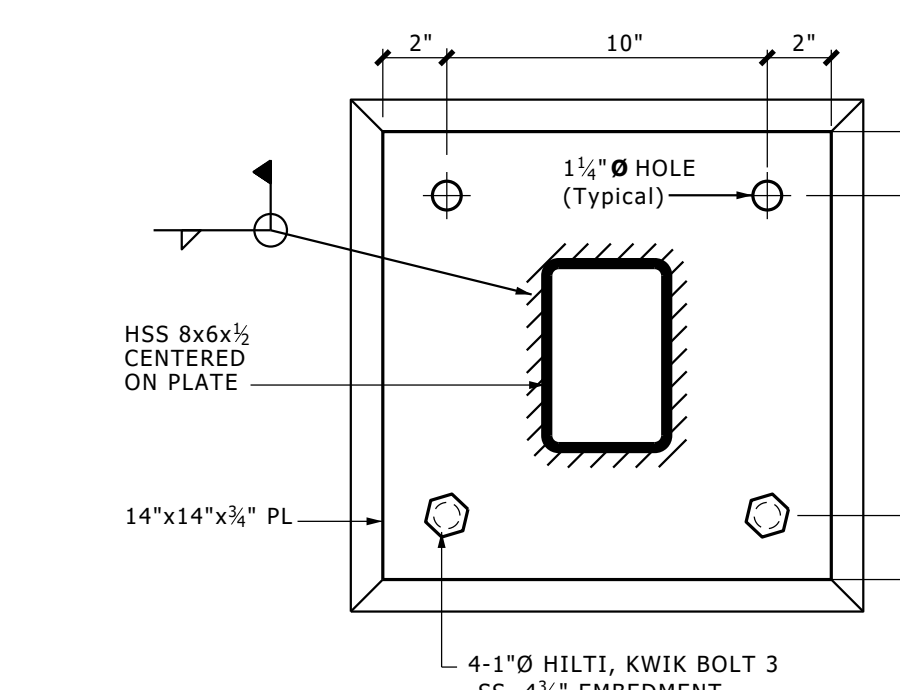
2 12" OR SMALLER PIPING ANCHOR & GUIDE STEEL SUPPORT
SCALE: 3/4" = 1'-0"



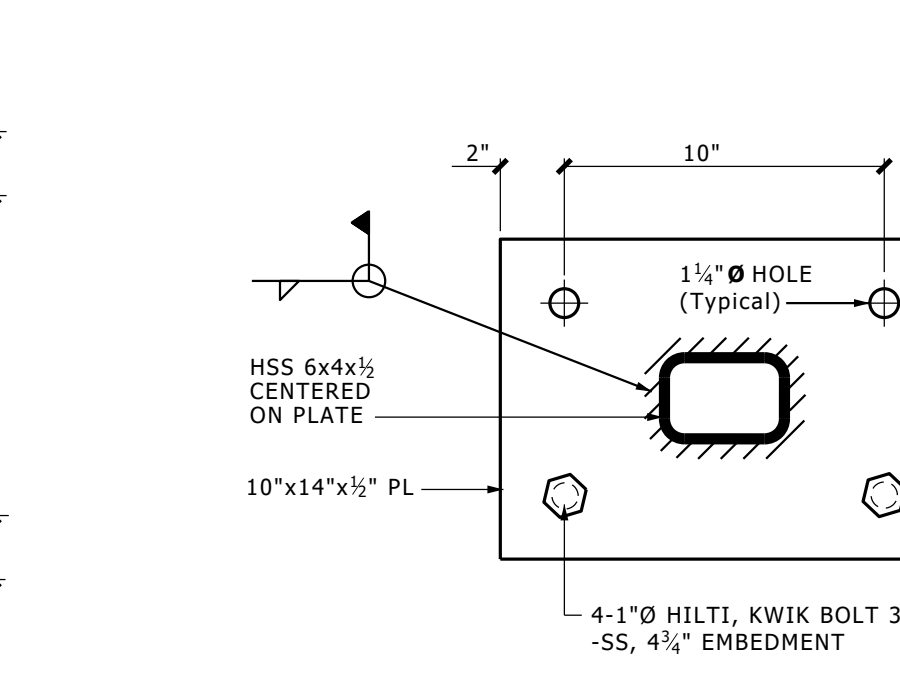
3 ROLLER & SLIDE STEEL SUPPORT
SCALE: 3/4" = 1'-0"



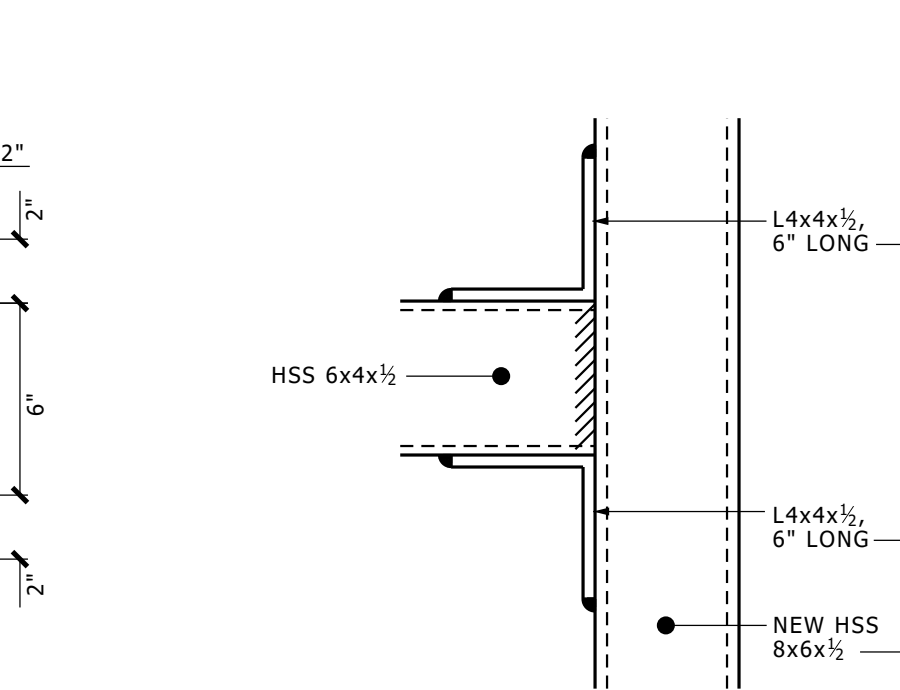
A TOP PLATE DETAIL
NO SCALE



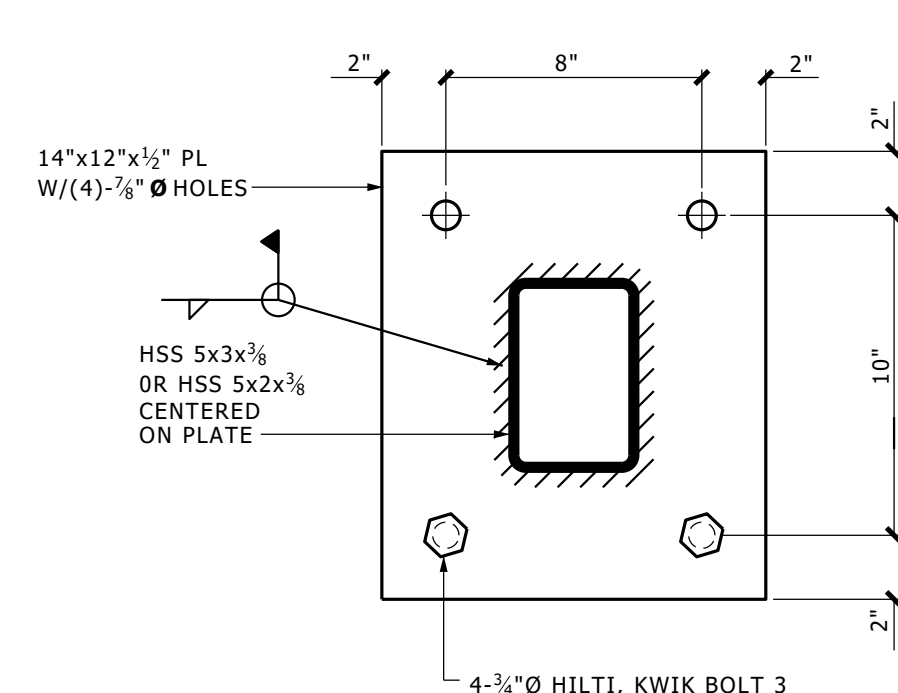
B FLOOR PLATE DETAIL
NO SCALE



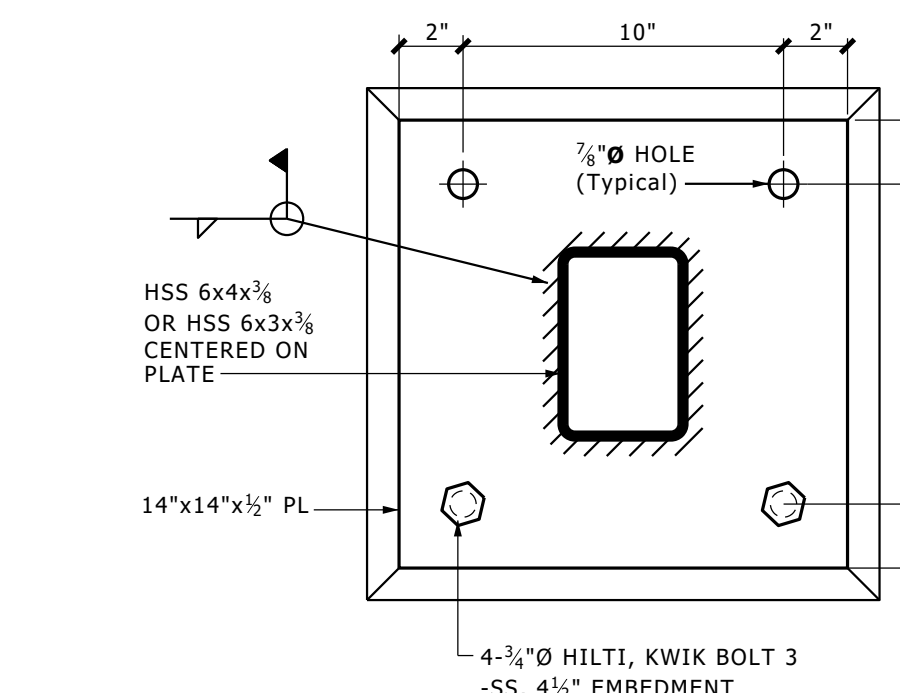
C WALL PLATE DETAIL
NO SCALE



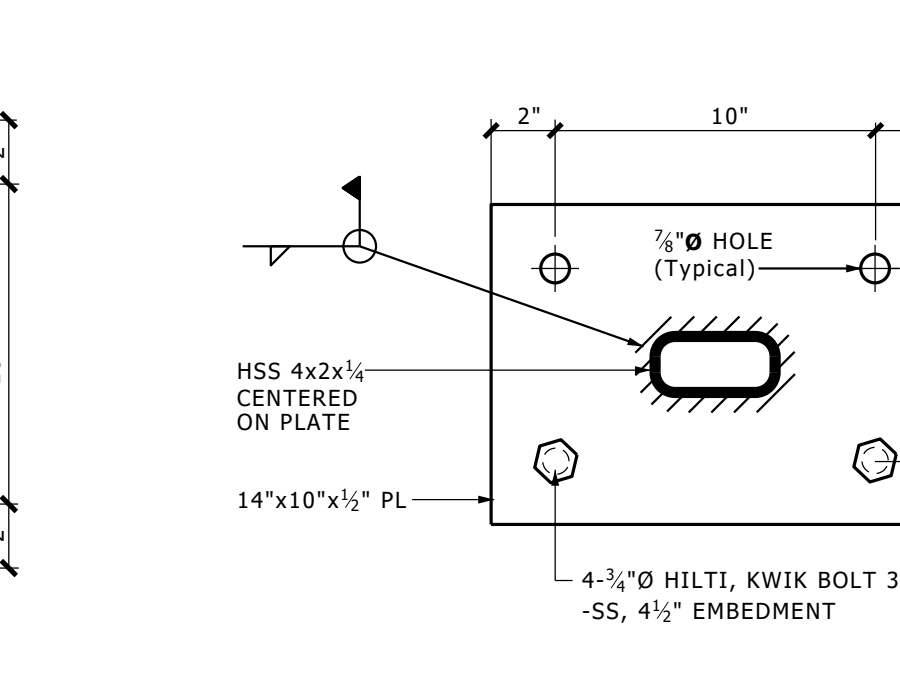
D CLIP DETAIL
NO SCALE



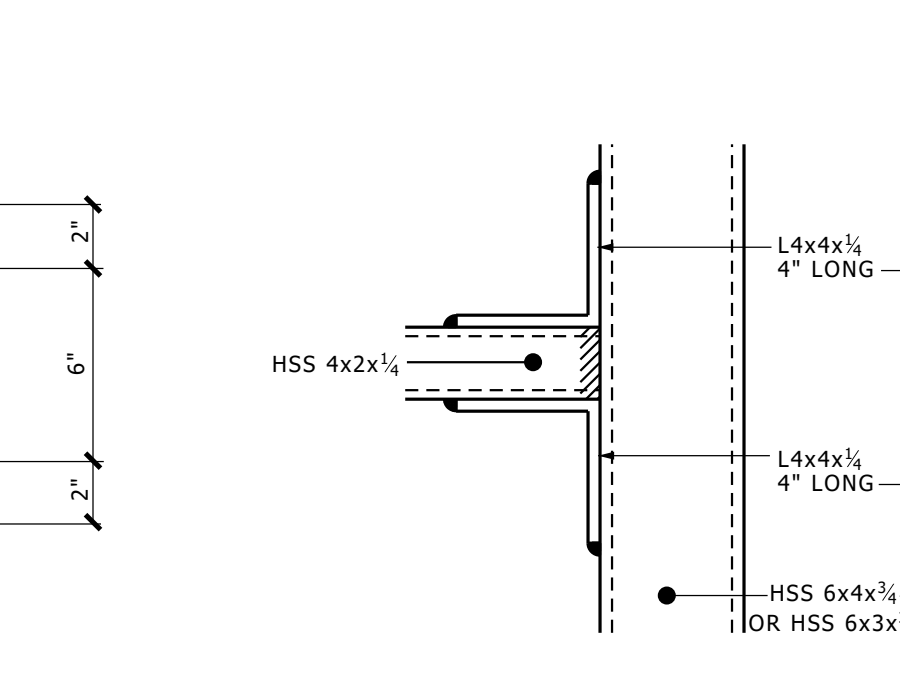
E TOP PLATE DETAIL
NO SCALE



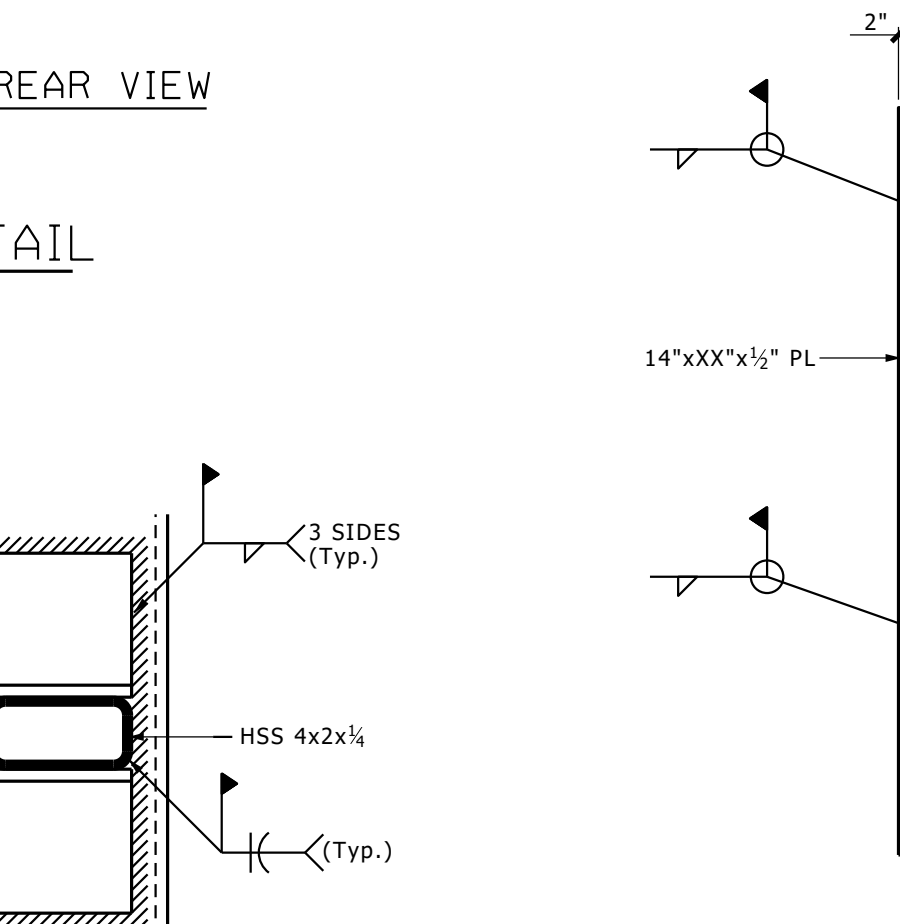
F FLOOR PLATE DETAIL
NO SCALE



G WALL PLATE DETAIL
NO SCALE



H CLIP DETAIL
NO SCALE

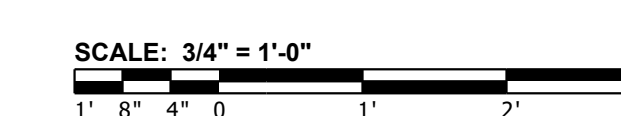


J WALL PLATE DETAIL
NO SCALE

WALL PLATE USED WHEN (2) HORIZONTAL STEEL PIPE SUPPORTS ARE REQUIRED

NOTE: PAINT PLATE PER GENERAL CONSTRUCTION NOTE THIS SHEET.

J WALL PLATE DETAIL
NO SCALE



10/19/2023 2:08:41 PM pschmand Q:\AES\PROJECT TYPES\TUNNELS\TUNNEL TOOL-KIT\CAD\TK-03 Rev 2023_10_20.dgn